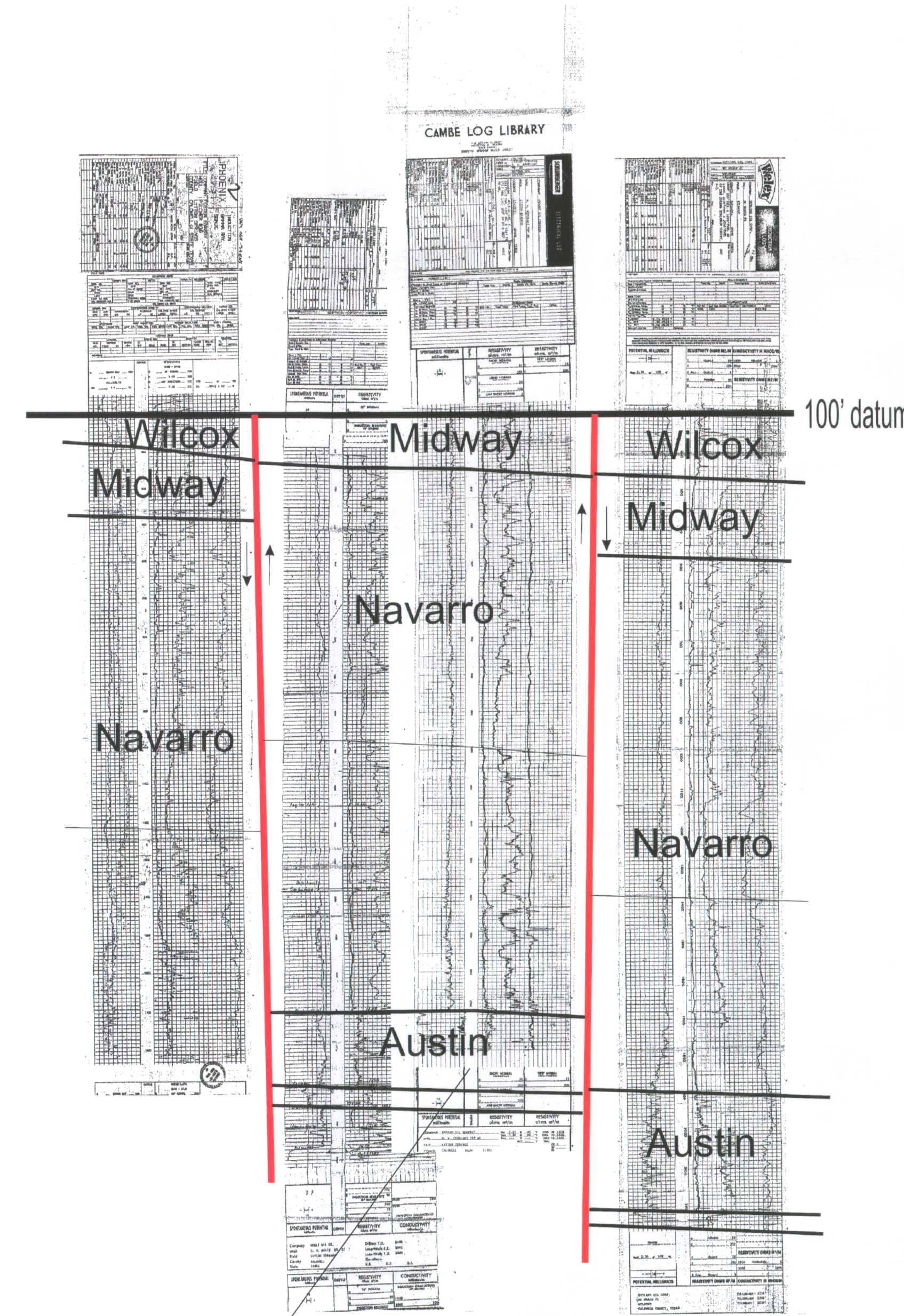
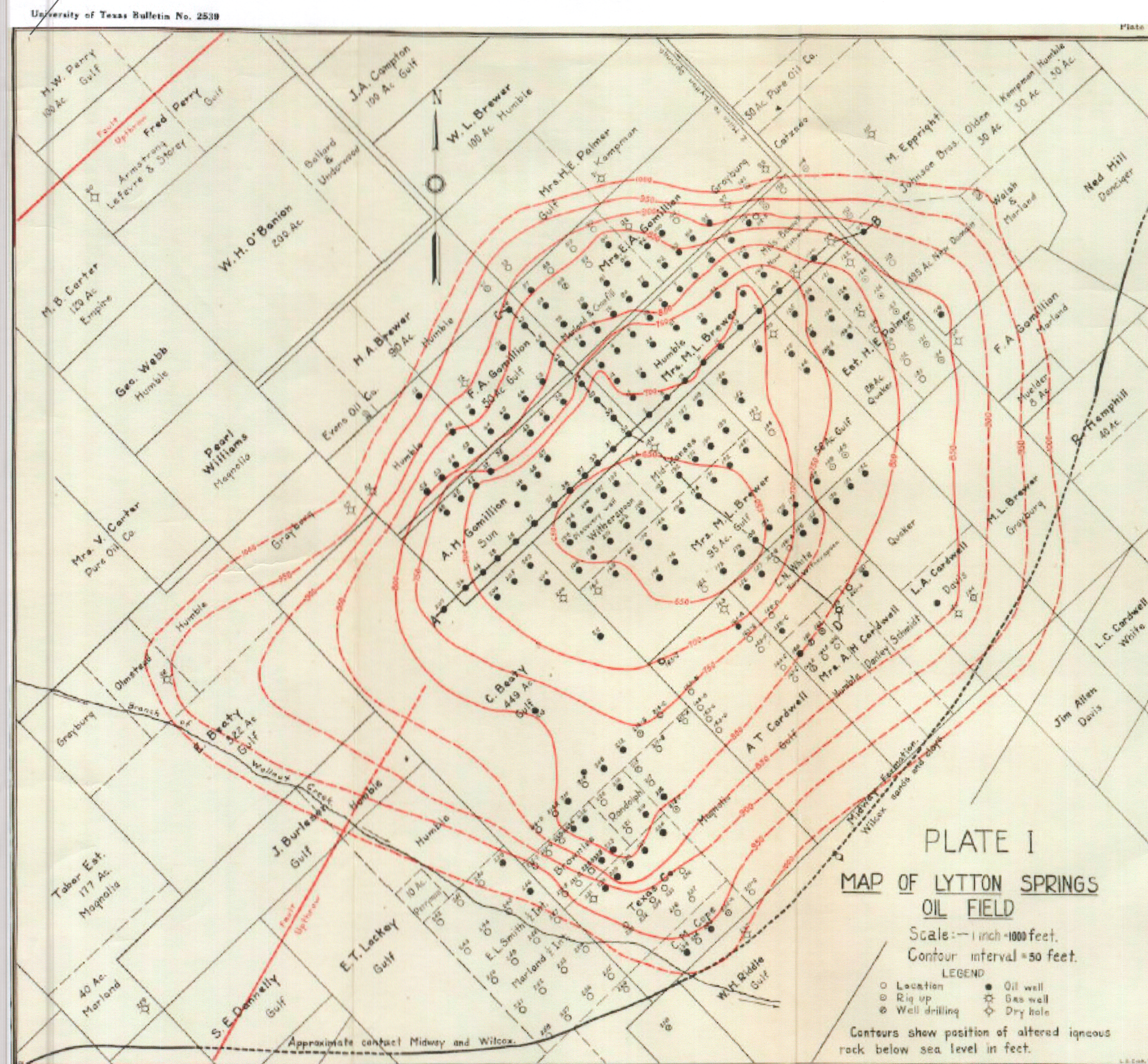


Surface Geology and Buried Igneous Intrusions

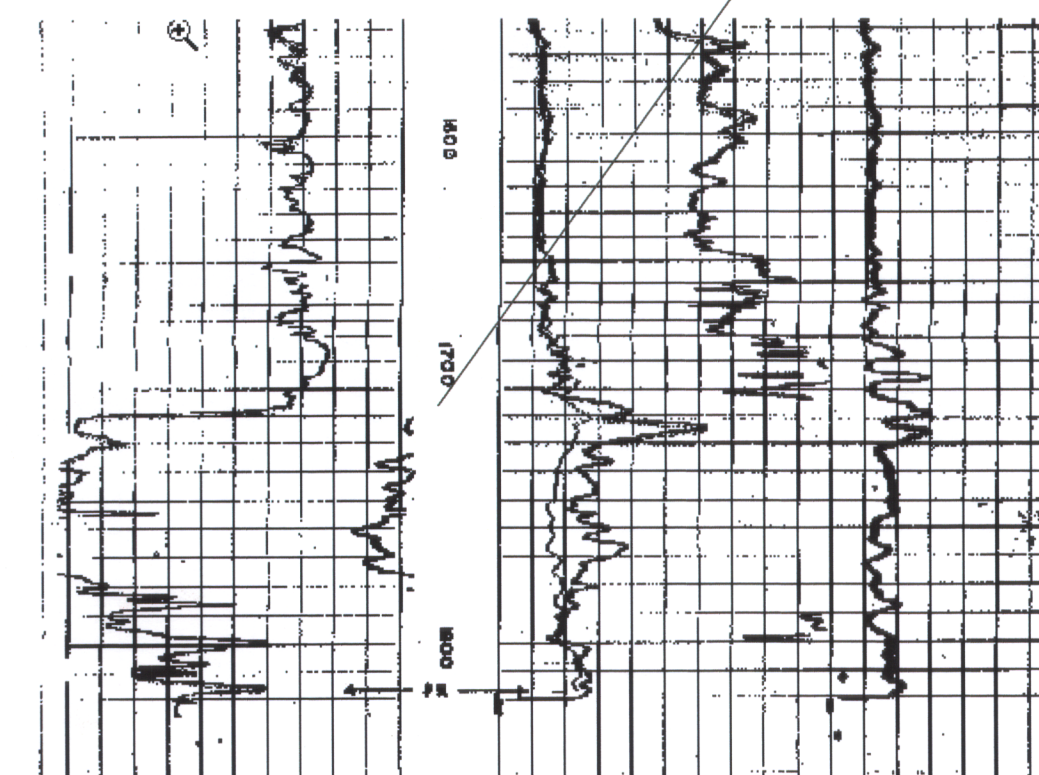


Lytton Springs Horst Log Correlations

The Lytton Springs Oil Field was discovered by Gulf Oil Corp. by surface geologic mapping in 1925. This was prior to the utilization of electric logs, which were first used in Texas in ~ 1931.



Structural Map - Lytton Springs Oil Field - 1925



Upper Austin Reef - Lytton Springs Oil Field

The Lytton Springs Horst is a structurally deformed feature set up by deep seated strike slip faults extending down to at least 40 Km (140,000') accompanied by Upper Cretaceous igneous intrusions that were emplaced on the upper Austin sea floor.

*William Feathergail Wilson, PG 21*

