

## AMENDMENT #1

July 30, 2015

Invitation for Bids (IFB)

No. PCCD-15-PCW6-01

Dated 07-14-15

Issued by

Plum Creek Conservation District

Lockhart, Texas

*The above numbered IFB hereby is amended as set forth below.  
The hour and date specified for receipt of offers is not changed.*

### PURPOSE OF AMENDMENT

1. To transmit **TWO revised Bid Schedule pages** and pen-and-ink changes to the IFB drawings and construction specifications, and to provide meeting minutes and attendance list for the July 28, 2015, Pre-bid Conference and Site Showing.
2. To remind bidders that oral explanations or instructions given before the award of the contract will not be binding. See PART I, Subpart B, Instructions to Bidders, Section 6.

Offerors ***must acknowledge receipt of this Amendment no later than*** the hour and date specified in the IFB for receipt of sealed bids by one of the following methods:

- (a) Make appropriate notations on Exhibit A, Offer form (PART I, Subpart C, page GP-9).
- (b) Complete and return form below. Form must be mailed or hand-carried to the address designated for receipt of bids, and be made to the attention of Johnnie Halliburton, Contracting Officer, clearly noting "Acknowledgment of Receipt of Amendment No. 1, IFB No. PCCD-15-PCW6-01" on the envelope. Fax, electronic, or telegraphic acknowledgments of receipt are not allowed.

---

### ACKNOWLEDGMENT OF RECEIPT

**Amendment No. 1 (07-30-15)**

**IFB No. PCCD-15-PCW6-01 – Plum Creek Watershed FRS Site 6 Rehabilitation**

Bidder's Signature: \_\_\_\_\_

Bidder's Name: \_\_\_\_\_

Bidder's Title: \_\_\_\_\_

Date Signed: \_\_\_\_\_

Company Name: \_\_\_\_\_

## **PEN-AND-INK CHANGES / Revised Page / Clarifications**

### **PART I – GENERAL PROVISIONS, Subpart C, Instructions to Bidders**

Instruction #2, Records (page GP-7 of 20). The five engineering documents listed as available for viewing at the Plum Creek Conservation District office also will be made available online at the PCCD website [www.pccd.org]. These documents are being made available to interested persons for informational purposes only and will not be a part of the construction contract.

### **PART I – GENERAL PROVISIONS, Subpart C BID FORMS**

**IMPORTANT NOTE:** *Failure to use these 2 revised Bid Schedule pages could result in rejection of a sealed bid.*

Remove and discard Page GP-10 of 22 and replace with **revised Page GP-10 of 22** (attached). The page was revised to include a block for bidder to enter the Total Bid Price both in Figures and in Words. Be sure to use the REVISED bid form page when preparing and submitting a sealed bid.

Remove and discard Page GP-13 of 22 and replace with **revised Page GP-13 of 22** (attached). Note that the estimated quantities for Bid Item 28 (HMAC Type C) and Bid Item 29 (HMAC Type D) have been changed.

### **PART IV – SPECIFICATIONS**

#### **Construction Specification 3, Structure Removal**

In Section 7.a.1., delete the words “and the driveway culvert”.

In Section 7.b. Bid Item 2 heading, change the word “Culvert” to read “Culverts”.

In Section 7.b.1, last line, change “culvert” to read “culverts”.

#### **Construction Specification 71, Water Control Gates**

Section 8.a.2. Delete “MHS-1” and insert “MHS-2”

#### **Construction Specification 91, Water Control Gates**

Section 6.a.2. Change last word “coated” to read “PVC” coated, “Color Black.”

#### **Construction Specification 446, Shaping and Smoothing**

Section 6.a.1. Delete “39+47” and insert “38+73”.

### **PART V – DRAWING NO. TX-EN-0650**

Sheet G-2. In the Material Placement Data, under Moisture Density Test, for the **Zone 4**. Change Moisture Density Test for ASTM 1557 from method A to read method **C**. Change Moisture Density Test for ASTM D698 from method A to read method **C**.

Sheet C-2. The Limits of Construction shall be changed south of Goforth Rd to include all of the existing Auxiliary Spillway and from the downstream fence corner on the right side of the auxiliary spillway facing downstream, then NW to the creek, then along the creek NE to the existing outlet structure. A sketch of this change is attached to this Amendment #1.

Sheet C-2. At Shape and Smooth Embankment (Sta. 15+25 to Sta. 22+65, delete the words "BASE BID". At Shape and Smooth Embankment (Sta. 22+65 to Sta. 38+73, delete the words "ALTERNATE BID".

Sheets C-8, C-9, and C-10. DELETE "Alt. Bid" on all cross sections.

Sheet C-27. Sidewall Elevation, End walls and Splitter wall of the riser are shown as 10. Add by Pen and Ink an inches mark after the 10 to indicate that they are ten inches thick as shown on Sheet C-31 (Section Top View).

Sheet C-52. Clarification: There are two different symbols used. One is identified as Sprigging and the other one is not identified. The sprigging area is the only pertinent area to be called out on this sheet. The other hatch areas represent the waste area (Sheet C-2) which will be sprigged, and the concrete slope protection downstream of the labyrinth weir.

## **7/28/15 SITE SHOWING / PRE-BID CONFERENCE MINUTES**

Note: Some items contained in the IFB were pointed out and are not included in these meeting minutes for purpose of brevity. However, this Amendment No. 1 contains information necessary for bidders to submit bids and all information where the lack thereof would be prejudicial to uninformed bidders.

### **WELCOME / INTRODUCTIONS**

The Contracting Local Organization for this project is Plum Creek Conservation District (PCCD), Lockhart, TX. The Contracting Officer (CO) for this project will be Johnie Halliburton (PCCD Executive Manager) and the Alternate CO will be Daniel Meyer (PCCD Assistant Executive Manager). USDA-NRCS will provide a full time Inspector (Tony Barley) and a Project Engineer (Tom Beach). Richard Standish and Jean Ann Maynard (R&J Contract Services) will serve as contract administration consultants to the PCCD for the project. The project is receiving funds from USDA-NRCS, TX State Soil and Water Conservation Board, and PCCD. A listing of all meeting attendees is attached to this Amendment #1.

The conference commenced at 10:00 a.m., and Johnie Halliburton welcomed attendees, made introductions, and provided a brief history of Site 6. After Administrative and Technical presentations, participants visited the project site. Questions and Answers from the conference are listed in the last section of this Amendment #1.

## **ADMINISTRATIVE PRESENTATION**

This material was presented by Jean Ann Maynard, R&J Contract Services. Administrative matters not contained in the IFB along with items in the IFB that were emphasized are as follows:

### **General Information**

Printed copies of the bid documents are not being distributed. If you want a copy of the Invitation for Bids (IFB) package, any future amendments to it, and the Plan Holder Registration Form, you must download the files from the PCCD website as stated in the Bid Notice.

Amendment No. 1 will be issued after this Site Showing and all registered planholders will be advised when it is available online. You need to prepare and return the Plan Holder Registration Form/Terms and Conditions in order to receive notification that Amendments are available for downloading. **Very important to register.** No hard copies of any Amendments will be mailed or emailed – you will need to download them from the District website.

Reminder: You must submit your acknowledgment of receipt of EACH Amendment (either on the Amendment cover sheet form or on bid form, Offer, Exhibit A).

Performance Time. Original time is 518 calendar days. Additional days will be added for eligible weather delays and any change orders that warrant more time, as needed. PT begins day after receipt of Notice to Proceed. The 518 days was computed to include 20 calendar days move-in time and working the maximum allowed workweek of 6 days per week, 10 hours per day. It also includes Sundays and the holiday shutdown periods listed in PART II, Article 20(e).

Sealed Bids are DUE (and will be publicly opened) at 10:00 AM sharp, Tuesday, August 11. Must hand carry or mail. No Fax or Telegraphic bids are allowed. NOTE: Deliver or mail bid to the PCCD office. Note the limited parking spaces at the PCCD office and be sure to allow plenty of time to deliver your sealed bid inside the office by the deadline.

Engineer's Cost Estimate. This will NOT be disclosed until after bids have been opened. The Estimated Price Range is: *between \$5 million and \$10 million.*

IFB/Contract Terms & Conditions. As a local contract, various requirements from Texas codes and statutes govern the basic contract. However, due to Federal funding, there are also some Federal clauses and requirements that aren't normally found in a local contract.

### **Instructions to Bidders (PART I – General Provisions, Subpart B)**

Encouraged to *carefully read*.

Section 2 – Conditions Affecting the Work. To view site (other than today) you need to make an appointment with Johnnie Halliburton and must be escorted to the site. Note that no digging or taking of core samples will be allowed.

Section 3 – Bid Must Contain (Original + 1 copy) *SEE Part I, Subpart C, Bid Forms*

- (a) Exhibit A - Offer. Sign in ink (must have legal Authority to contractually bind the company).
- (b) Exhibit B – Bid Schedule. Offer must be valid for minimum of 30 days. Be sure to use the **TWO revised Pages GP-10 of 22 and GP-13 of 22** (IFB Amd. #1) when preparing and submitting a sealed bid.

(c) Exhibit C. References.

(e) Exhibit D – Bid Bond

Bid Guarantee: 5% of TOTAL bid price.

Certified or cashier's check (responsible TX bank). --- OR ---

Bid bond. (1) Must use Exhibit D form (original + 1 copy). (2) Must meet all Bid Bond Requirements for surety as stated in Section 8. READ THIS CAREFULLY. NOTE surety must be U.S. Treasury listed.

(f) Exhibit E – Bidder Certifications. (1) Four sections need to “circle” appropriate answer and write in surety information on one. (2) Some non-Texas resident bidders must provide a Certificate of Authority from TX Secretary of State to transact business in Texas.

#### Section 4 – Preparation of Bid

IFB documents and Plan Holder Registration Form must be obtained using the District website as outlined in the Public Bid Notice. Printed copies of the IFB package are not available. The official printed hard copy shall take precedence over an electronic media copy. This official file hard copy may be viewed at the PCCD office.

Submit offer in DUPLICATE (original + 1 copy of all documents).

Bidders are entitled to EXCLUDE exempted taxes in bid price. Contractor will be performing a contract for an exempt organization. The District will issue an Affidavit to the Contractor. Contractor must issue a Tax Exempt Certificate to each supplier. Contractor is responsible to know and follow all TX Codes regarding this. [Details in Part II, General Conditions, Article 29]

Bid Schedule (Exhibit B). Must price each Bid item (Item 1-58). Note that the Bid Schedule is 3 pages long – failure to price each item is basis to reject bid.

Section 6 – Explanation to Bidders / Inquiries. NO verbal explanations or instructions given before award of the contract will be binding. ALL questions regarding the meaning or interpretation of any bid document must be submitted IN WRITING to Johnie Halliburton (Fax is allowed). The deadline to submit written questions is noon, Tuesday, August 4. If the answer requires interpretation of a bid document, it will be given in writing to all planholders via an Amendment to the IFB. Please send all inquiries through Johnie. If an Engineer's input is needed, he will do so [please don't contact Tom Beach directly].

Section 8 – Bid Bond Requirements. All bids require a bid guarantee in the amount of not less than 5% of Total Bid Price. Bonds must be on the form provided in the bid package.

Section 11 and 12 – Qualification/Disqualification of Bidders. Carefully note these requirements. In order to be awarded the contract, the low bid must meet two requirements. First, bid documents are reviewed to determine if the bid is “responsive”—meets essential elements of the IFB requirements. Then, the “responsibility” of the bidder is determined. Technical and financial references are carefully checked to ensure bidder is qualified, etc. These clauses list what will be considered in determining the “responsibility” of the bidder.

Section 20 – Records. This lists documents available at the PCCD office for viewing by interested parties. There is a large set of drawings, soil mechanics report, geology reports, and geotechnical investigation.

**Anticipated Schedule / Contracting Procedure**

**Bid Opening** (Tuesday, August 11): Publicly open sealed bids. Declare apparent low bidder and meet with their representative. **Issue Notice of Award** (by Friday, August 14, if possible). You will have 5 workdays to submit your **1<sup>st</sup> post-award documents** [See Part III – Supplemental Conditions, Article 4 for a LIST]. You are encouraged to review these now and be prepared to submit on time (or your bid security could be forfeited and the District would move on to 2<sup>nd</sup> low bid). **2<sup>nd</sup> Post-award Documents**. These will be requested about August 25 and will be due about September 8 (such as construction schedule, quality control plan, safety plan, etc.). The **Preconstruction Conference**, will be held about September 24 followed by the **Notice to Proceed** about Monday, September 28. Day #1 of PT would be Tuesday, September 29. The 20-day deadline to commence work (mobilization does not count) would be Monday, October 19.

**General Conditions (PART II)**

**Exceeding Time in Contract** [Article 5]. If you do not complete work within performance time and it is deemed in best interest of District to allow Contractor complete work (vs. terminate for default), will assess **actual damages**. NO liquidated damages clause.

Actual damages will not be assessed for lost revenue and/or taxes. Actual damages will be based upon the additional costs incurred by the Contracting Local Organization (CLO) and the Grantor Agencies (USDA-Natural Resources Conservation Service and Texas State Soil and Water Conservation Board) resulting from the Contractor not completing the work within the allowable performance period. These costs include but are not limited to personnel costs (Inspector, Engineer, Contracting Officer and related personnel), travel costs (lodging, per diem, mileage, etc.), additional supplies, etc. Your bonding company can contact the District if it has additional questions about this clause.

The clause also allows for an extension of performance time (without terminating the Contractor's right to proceed or charging Contractor with actual damages) if a delay in completion of the work arises from unforeseeable causes beyond the control and without the fault or negligence of the Contractor. Note that TIME only is allowed (no costs are allowed).

**Payments / Invoicing Requirements** [Article 7]. Progress payments will be made monthly. Per Texas Water Code, District shall retain 10 percent of progress payments on the first 50 percent of work completed (without paying interest). Please note that the payment due date for the District is within 45 days of receipt of "proper" invoice. The District will strive to pay sooner than 45 days if possible. Per paragraph (h), Contractor and Subcontractors must follow TX Government Code 2251 rules for paying others for goods, services, etc. related to performing the work.

**Superintendence** [Article 10]. Must have full-time superintendent acceptable to CO. You will be asked to propose an Alternate superintendent for approval so that you have a backup in place to serve in the absence of the regular superintendent.

**Permits and Responsibilities** [Article 11] and **Other Contracts** [Article 13]. The Contractor is responsible to determine all Federal, State, and municipal laws, codes and regulations that apply to this project and comply with them. Also, Contractor is required to obtain all necessary licenses and permits at own expense. The Contractor is responsible for all materials delivered and work performed until completion and acceptance of the entire construction work. NOTE that fish in the reservoir will be relocated prior to construction, and it is highly unlikely any additional relocation will be performed during construction.

Real Property Rights [Article 16]. The District has acquired all landrights to perform the work and the Construction Work Limits are shown on the drawings. Contractor shall obtain owner's advance written approval if he/she plans to enter, remove, or otherwise make use of adjacent property, roads, utility lines, fences, and other improvements not included within the real property rights provided by the Contracting Local Organization. A copy of the written approval must be submitted to the Contracting Officer. Any associated costs are Contractor's responsibility.

Water [Article 19]. Contractor is responsible to provide and maintain at own expense an adequate supply of water needed to perform the work. Contractor must locate and arrange for adequate water source(s) and obtain any required permits to take/use water and a copy of those permits will need to be submitted to the Contracting Local Organization. A permit from TCEQ is required if you want to take water from the reservoir.

Workweek - Construction Schedule [Article 20]. Requires written schedule prior to commencement of work (CO must approve). Maximum Work Week: Monday – Saturday (10 hours per day). Work may be performed during daylight hours only. If during concrete placement work is needed during non-daylight hours, this clause can be changed to allow such work under certain conditions (such as giving 48 hours advance notice and securing approval from the Engineer and Contracting Officer). Holidays: Project will be shut down (and days are included in the performance time): Independence Day, Labor Day, and breaks at Thanksgiving and Winter.

Subcontractors [Article 21]. All require CO written approval (prior to signing a subcontract).

Surveys [Article 22], Shop Drawings [Article 30], and Layout of Work [Article 35]. Some general information. Tom Beach will discuss contract requirements more thoroughly in his technical presentation.

Suspension of Work [Article 23]. Contractor is eligible to recover damages for any unreasonable delays as specified in this clause. Includes additional performance time and damage costs (excluding profit).

Weather [Article 26]. PT of 518 calendar days does not include any adverse weather delays. PT will be extended if warranted by weather or its effects. Allows TIME only (not costs or damages).

Quantity Variations [Article 28]. 25% clause for estimated quantities in bid schedule. Variations within 25% are paid at the bid price and there is no adjustment in performance time. If variation exceeds 25% (over or under), the contract price/time is equitably adjusted for the quantity that exceeds 25% (over or under). [This differs from Article 3 regarding "Changes". If any new work is added to the contract (or any work is deleted), this is not a Quantity Variation and Contractor is entitled to an equitable adjustment in the contract price and performance time.]

Accident Prevention and Safety [Article 41]. Includes Supplement to OSHA regulations with many requirements. Tom Beach will cover later. VERY important – will monitor and enforce safety.

### **Supplemental Conditions (PART III)**

Insurance Requirements [Articles 1-3]. Read carefully. Due 5 workdays after receipt of Notice of Award. If approved subcontractors are not covered on prime Contractor's insurance policies, proof

that subcontractor carries the same types/levels of coverage is required. NOTE that some policies require District to be listed as additional named insured and all policies must include a waiver of subrogation.

Post-Award Information [Article 4]. Lists items you must submit within 5 workdays after receipt of Notice of Award. Be prepared to do this!

Performance of Work [Article 5]. The prime contractor must perform at least 20% of work with own forces.

Commencement, Prosecution, and Completion of Work [Article 6]. Note that you must commence work within 20 calendar days of date you receive written Notice to Proceed (mobilization does not qualify). Performance time is 518 calendar days.

Wage Rates [Article 8]. Because construction, must pay prevailing wage rates for laborers and mechanics. Rates in PART VI.

Performance/Payment Bonds [Article 13]. Gives specific requirements. (a) Due 5 workdays from date receive Notice of Award. (b) Penal sum: 100% of contract award price.

Special Federal Requirements [Articles 14 - 19]. EEO, affirmative action, debarment & suspension, lobbying, clean air and water.

Subcontractor Certification (TPDES) [Article 20]. Note that subcontractors who perform work that may impact pollution control measures must sign a certification form (see Appendix A of Construction Specification 5).

Subcontracts. Several of the clauses in Supplemental Conditions must be included in subcontracts (depending on dollar amount of subcontract).

## **TECHNICAL PRESENTATION**

This material was presented by Tom Beach (Project Engineer). Technical matters not contained in the IFB and additional items emphasized are as follows:

Pen-and-ink changes that will be made to the Construction Specifications (Part IV) and Drawings (Part V) were discussed.

## **PART II – GENERAL CONDITIONS**

### **Article 41 Accident Prevention & Supplement to OSHA Part 1926 and 1910 Construction Industry Standards and Interpretations**

The Contractor shall comply with applicable OSHA safety regulations 1926. The Contracting Officer will notify the Contractor of any noncompliance with these requirements. If the Contractor refuses to comply with these requirements, all or part of the work may be suspended until corrective action is taken.

The Inspector and Project Engineer will have delegated authority to suspend work for any noncompliance with safety requirements that poses a serious or imminent danger to the health or



safety of the public and/or personnel of the Contractor, Contracting Local Organization, or State Grantor Agency, or the NRCS Personnel.

The Supplement to OSHA 1926 and 1910 emphasizes several specific safety items which must be understood by the Contractor prior to bidding this job. Among these items are the requirements for:

1. Written plan for accident prevention and safety (CO must approve prior to beginning work).
2. First Aid Training certificates
3. First aid facilities – on site
4. Safety Meetings, weekly “tool box” and monthly
5. Dust control
6. Rollover protective structures
7. Backup alarms
8. Restroom Facilities
9. Scaffolding and Fall Protection

Hard hats shall be worn on the job site at all times and equipment shall be outfitted with working backup alarms, seat belts, and approved roll-over protective structures.

All equipment shall be inspected by the NRCS Construction Inspector prior to use on the project. Equipment will be inspected at the job site.

#### **Article 8 –Material and Workmanship**

Certificates and test data shall be submitted to show compliance of materials and construction specified in the contract requirements. Materials or equipment for which samples, certifications or test data are required shall not be used in the work until approved in writing by the Contracting Officer Representative.

#### **Article 30 - Shop Drawings**

Required shop drawings include; Reinforced Concrete Pressure Pipe, New Sluice Gate and appurtenances, Steel Reinforcement fabrication details. And items stated in Construction Specification 81, Section 7.a.

### **SECTION IV – SPECIFICATIONS**

There are two types of specifications in this contract: (1) Construction Specifications and (2) Material Specifications. The construction specifications are composed of two parts. The first part is called the closed specification and is the standard NRCS construction specification that begins with the SCOPE and ends with MEASUREMENT AND PAYMENT or PAYMENT. The second part is called the open specification and consists of the ITEMS OF WORK AND CONSTRUCTION DETAILS that are written specifically for this job.

Special emphasis items are covered below.

## **2- CLEARING AND GRUBBING     Subsidiary Item**

Consists of all clearing and grubbing required to construct the embankment, auxiliary spillway, and outlet channel. All cleared and grubbed materials shall be chipped and removed offsite (at Contractor's expense) or used onsite for mulch. Burning is Not allowed. Work shall be accomplished in a manner to protect trees and vegetation not designated to be disturbed. Compensation is to be included in Bid item 12.

## **3 - STRUCTURAL REMOVAL     Bid Item 1-4**

Disposal shall be offsite (at Contractor's expense) for all four bid items.

**Bid Item 1:** Work includes removal of designated Fences as shown on the Drawing TX-EN-0650 Sheet C-3.

**Bid Item 2:** This item of work requires the Contractor to remove pavement and road base material from Goforth Road and adjacent driveways as shown on drawings. It also includes removal of a driveway culvert and road culvert. Two culverts shall be removed.

**Bid Item 3:** Work includes removal of existing inlet structure and appurtenances on the existing riser and outlet pipe sections shown on plans including concrete antiseep collars, pipe support, and pipe cradle, and concrete plunge pool.

**Bid Item 4:** Work includes removal of existing rock riprap on upstream slope of dam as shown on drawings.

Subsidiary Items to each of the bid items under structure removal are the excavation and earthfill required to remove the structures designated.

## **5 - POLLUTION CONTROL     BID ITEM 5 and 6:**

**General.** A SWPPP is required for this site (copy included in the solicitation). The prepared SWPPP shall be amended by Contractor to include a detailed work sequence outline which defines and delineates the Contractor's construction operation [as shown on Construction Schedule, required]. All applicable TCEQ rules and regulations concerning the TPDES and the SWPPP shall be followed, including stabilizing entrance to prevent mud tracking onto roads.

**Bid item 5,** includes work required to accomplish the requirements of Section 1, maintain sediment filters, and to implement the SWP3. Method 3 in Section 7 establishes lump sum payment for this Bid Item 5 work which is prorated in equal monthly payments. (Method 3 in Section 7). **Bid item 6** - sediment filters (silt fences), shall be installed as per SWPPP requirements and the Drawings (see Sheet C-52). Payment shall be per linear foot installed.

## **6 - SEEDING, SPRIGGING, AND MULCHING     Bid Item 7, 57, 58**

**Bid Item 7.** - Consist of preparing seedbed, fertilizing, sprigging and hay mulching, and tackfing. A good quality coastal Bermuda grass or bluestem mix Hay Mulch is required on all areas sprigged. . Measurement and payment is per Section 6, Method 1 (nearest 10<sup>th</sup> acre). Hay mulch application rate is 2.5 tons per acre. The sprigged area shall be fertilized with a rate of application of 80(N)-80(P)-80(K) pounds per acre with a slow release coating.

Bid Items 57 and 58: require installation of a temporary solid set irrigation system and watering to establish vegetation.

#### **7 - CONSTRUCTION SURVEYS     Bid Item 8**

The Contractor is responsible for the layout of all the work. Also the Contractor is responsible for checking (blue topping) all work. The Contractor shall also submit to the Contracting Officer in writing the name, qualifications and experience of the surveyor personnel for approval prior to commencement of work.

The Contractor is responsible for providing survey information to the CLO as stated in Section 7, Records. Per 9.a.4 the initial cross sections have been previously surveyed for the calculation of quantities - provided no other changes are made from the planned lower limits of excavation.

#### **8 - MOBILIZATION AND DEMOBILIZATION     Bid Item 9**

The Contractor shall provide all utilities including 24 hr. electrical Service to a Contractor furnished field office trailer. They must be in place prior to work requiring continuous inspection and no later than 15 days after receipt of the Notice to Proceed.

Other Spec Requirements. Access road to the camp site and work area shall be constructed and maintained including a culvert crossing as needed. Install additional culverts as needed in low areas. Note requirements on Drawing Sheet G-3 for Contractor's responsibilities for installing a rock stabilized entrance. Work includes Demobilization, and some of these items are described.

Section 3 PAYMENT it states, "Payment will be made as the work proceeds, after presentation of paid invoices .... by the Contractor showing specific mobilization and demobilization costs and supporting evidence of the charges of suppliers, subcontractors, and others." You may be asked to provide proof of the total direct cost. You will have to submit paid invoices for the purchase of bonds and mobilization supplies in order to be reimbursed for these items prior to the final payment.

#### **9 - TRAFFIC CONTROL     Bid Item 10**

Requires the Contractor to submit a written plan for the control of traffic, and placement of signs, all meeting the TXDOT Standard Specifications for Construction and Maintenance of Highways, Streets and Bridges (2014) and must be approved by CO. See Drawing C-43, C-44, C-45, C-46 for the advanced warning signage required, general notes for Traffic Control and the suggested sequence of construction.

#### **11 - REMOVAL OF WATER     Bid Item 11**

This item of work requires the Contractor to submit written plans for diverting the surface water and dewatering the construction site for approval before beginning construction. Protection to the new PS and Labyrinth spillway is required. The protection plan is required to be designed and stamped by a Registered PE in Texas.

#### **21 - EXCAVATION     Bid Item 12, Subsidiary Items**

There is no guarantee that materials obtained from the specified excavations may be used directly in the specified fills. Stockpiling of excavated materials to be used in the specific zones of the fill shall be required (to insure their availability).

Bid Item 12. Excavation, Common, this item consist of excavation to construct the embankment extension, new PS riser, conduit, labyrinth spillway, excavations, for road realignment, and outlet channel.

The measurement and payment method in Section 9 is Method 2. Bid Item 12 also includes payment for work in Subsidiary Item, Excavation, Common, Foundation Stripping. Strip from 3 to 12 inches as required to remove weeds, grass, roots, and soils containing significant vegetative or organic material prior to placing earthfill.

Subsidiary Items listed: (paid under other bid items):

Foundation Stripping

Foundation Drain

Structure removal (excavation to remove existing structures)

Rock Riprap

Filter Diaphragm

**23 - EARTHFILL      Bid Item 13, 14, 15, 16 and Subsidiary Item**

Under Bid Item 13, Zone 1 - earthfill require Class A compaction. See Materials Placement Data on Drawing TX-EN-0650, Sheet G-2. In-place dry density of materials being placed shall not be less than 95 percent of the minimum dry density obtained during tests performed in accordance with procedures contained in ASTM Designation D-698, using Method A. In Section 4 Placement, fill shall not be placed until the required excavation and foundation preparation have been completed and the foundation has been inspected, surveyed and approved by the Engineer. Fill shall be placed in horizontal layers. Note the requirements for processing the fill material.

Bid Item 14, Zone 2 – CH, earthfill require Class A compaction. See Materials Placement Data on Drawing TX-EN-0650, Sheet G-2.

Bid Item 15, Zone 3 – CL, Material source – imported Fill, earthfill require Class A compaction. See Materials Placement Data on Drawing TX-EN-0650, Sheet G-2. Minimum Percent Compaction is 95 -100% depending on location.

Bid Item 16, Zone 4 – Crushed Stone, Material source – imported Fill, earthfill require compaction testing. See Materials Placement Data on Drawing TX-EN-0650, Sheet G-2, Depending on particle gradation, TxDOT TEX-113E may be used (see note 3 below table on G-2). The zone 4 material Moisture Density Test for ASTM 1557 and D698 shall be method C. (in IFB Amd. #1)

For the field testing, the Contractor shall use the sand cone Method. The Contractor's QC may prove use of a nuclear gage by having a side by side test with the sand cone and comparing results. If results are less than 1%, using a nuclear gage shall be acceptable for Zone 4 materials.

Subsidiary Items listed: (paid under other bid items)

Structure removal (earthfill to backfill the excavation of removed existing structures)

Rock Riprap

Concrete Structures

**24 - DRAINFILL                      Bid Item 17, 18, 19**

The drainfill shall meet the requirements of Material Specification 521. The percentage of drainfill materials finer than the No. 200 U.S. Standard Sieve Size shall not be more than 3 percent. A soundness test on the fine and coarse aggregate is required. Note: sieve analysis is required on delivered materials [see Construction Specification 94, Section 10.a.8.e.].

The fine aggregate shall not be limestone or crushed limestone except in combination with other materials such that not more than 5% of the portion finer than the No. 4 sieve shall be limestone. The gradation requirements for the fine and coarse aggregates are shown on the drawings Sheet G-2. Class A compaction of the drainfill is required as specified in Section 9. Trench depths are limited to 5 feet. Trench Safety OSHA guidelines shall be followed.

Bid Item 17- fine aggregate for the filter

Bid Item 18 – fine aggregate for the Toe Drain

Bid Item 19 – Coarse aggregate for the foundation trench drain, labyrinth spillway, spillway chute and stilling basin.

**26 - TOPSOILING                      BID ITEM 20:**

This item consists of salvaging and placing topsoil on roadway modifications, backfill for the labyrinth spillway, waste areas, staging areas and stockpile areas.

Subsidiary Item requires topsoil to be placed on earthfill as shown on the drawings. Method 1 in Section 5 states that the topsoil shall be placed after the earthfill is finished. Item consists of salvaging and spreading topsoil on earthfill areas such as the embankment. Compensation for this work should be included in Earthfill. Zone 1 and 2.

**28 – LIME TREATED EARTHFILL                      BID ITEM 21 and 22:**

Bid item 21 consists of lime treating the base for the construction of Goforth Road using quicklime.

Bid item 22 consists of furnishing and handling the quicklime. Compensation is per ton placed.

**31 - CONCRETE FOR MAJOR STRUCTURES                      Bid Item 23, 24, 25, 26, 27, 28 and 29, and Subsidiary Item**

Measurement and payment for concrete shall be per Section 24, Method 1 (nearest .1 cu. yd.). All Concrete items shall be constructed using Type II or Type V, low alkali cement.

All finished surfaces exposed to air or water shall be finished by (1) a complete Carborundum stone rubbing, or (2) by treatment with cement based heavy duty coating such as "MasterSeal 581" manufactured by Master Builder Solutions. All concrete must equal or exceed Class 4000. The slump specified shall be 4" +/- 1".

Bid Item 23: structural concrete for riser.

Bid Item 24: Concrete, Pipe Cradle. This item requires the Contractor to furnish and install the pipe cradle for the principal spillway conduit.

Bid Item 25: structural concrete for slope paving.

Bid Item 26: structural concrete for Labyrinth Weir walls.  
Bid Item 27: structural concrete for Labyrinth spillway slab.  
Bid Item 28: structural concrete for Training and Wing walls.  
Bid Item 29: structural concrete for culvert inlets and outlets.

(Paid under other bid items) Subsidiary Items – Permanent Reference markers, and Incidental concrete.

**34 - STEEL REINFORCEMENT      BID ITEM 30**

All work required to furnish and place all steel reinforcement required for the construction of the concrete works for this site, including welded wire reinforcement, except for the box culverts steel.

**41 - REINFORCED CONCRETE PRESSURE PIPE CONDUITS      Bid Item 31**

Includes furnishing and installing the 42" Inside diameter Pre-stressed, concrete lined, steel cylinder pipe. AWWA C-301 pipe is required. Pressure testing is not required.

**45 - PLASTIC PIPE      Bid Item 32**

Perforated and non-perforated PVC plastic pipe shall be AWWA C900, pressure class 100; ASTM D1785, schedule 80; or ASTM D2241, SDR 21. Six-inch ID pipe is required. Payment for this item also includes payment for Subsidiary Item, concrete Incidental - installation of cleanouts.

**61- ROCK RIPRAP      BID ITEM 33**

Rock Type 1 is required. Test load requirements are in 8.a.3. Note the testing requirements in Material Specification 523 and the methods required for the soundness test. Equipment shall not be allowed on the rock during or after placement. Statement-of-delivery ticket showing weight to the nearest 0.1 ton is required and shall be furnished to the Inspector. Delivery of rock is allowed only during regularly scheduled work hours.

**71 - WATER CONTROL GATE      Bid Item 34**

This item of work shall consist of installing a slide gate 12" x 12" including a wall thimble, gate, stem, stem guides, and lift pedestal. Section 8.a.2. shall be changed (in IFB Amd. #1) to a MHS-2 from a MHS-1 required

**81 - METAL FABRICATION AND INSTALLATION      BID Item 35, 36, Subsidiary Items**

This specification includes requirements for furnishing and installing the specified metal work for the inlet and outlet structures.

Bid Item 35: includes Trash Rack and Manhole Cover and frame, cleanout covers and concrete for the trench drain cleanouts covers, pipe runners, and rodent guards. Furnish, fabricate, and install.

Bid Item 36 – includes the metal beam guardrail in accordance with TxDOT.

Subsidiary Item, Chain Link post assemblies. Note that these items shall be paid in (Bid Item 37, Fence Chain link).

**91 – CHAIN LINK FENCE     Bid Item 37 and 38**

Bid item 37 includes requirements for furnishing and installing chain link fence including gates for the labyrinth spillway, spillway chute and stilling basin. Coating shall be polymer- color black.

Bid item 38 includes requirements for furnishing and installing the posts and gates across Goforth Road.

**92 - FIELD FENCE             Bid Item 39**

Contractor shall install fences per specification and at approximate locations shown on drawings. Final locations shall be staked by the CO. Four gates are required.

**94 - CONTRACTOR QUALITY CONTROL     BID ITEM 40**

In Sections 3 and 4, Method 2 shall be used. This requires the quality control activities to be performed by competent personnel who are separate and apart from the line supervision and who report directly to management. Names of quality control personnel and their duties, qualifications, certifications, and authorities are required and shall be submitted to the CO for approval. A written plan (quality control system) must be submitted to the CO for approval. Daily QC reports are required to be submitted to the Inspector. Any testing done by the CLO is for the sole benefit of the CLO. It is the Contractor's responsibility to perform tests to prove and ensure that all work performed meets the contract requirements. All tests shall be conducted in accordance with the appropriate ASTM method and with equipment that meets the requirements of the specified ASTM test method. Contractor's scheduling of construction activities may require more than one on-site quality control inspector (note the degree of quality control specified). Digital photos documenting the work are required with automatic imprinting of time and date as specified.

**95 - GEOTEXTILE             Bid Item 41**

A non-woven Class I as defined in Material Specification 592, Table 592-2 is required. Per Section 5, Method 2, the non- woven geotextile shall be secured in place with pins and overlap shall be 18 inches.

**446 – SHAPING AND SMOOTHING     Bid Item 42**

This item requires the Contractor to shape and smooth from 15+25 to 22+65 and top of dam from 22+65 to 38+73 (correction will be in IFB Amd. #1).

**493 – GUARDRAIL TERMINALS             Bid Item 43 and 44**

This item requires the Contractor to furnish all material and labor to install the terminal anchor sections and the guardrail end treatment in accordance with the plan and TXDOT specification Item 540 and 544.

**494 – BOX CULVERTS**                      **Bid Item 45 and 46**

Item 45 requires the Contractor to furnish and install 5'x5' concrete box culverts for the PS culvert outlet and Item 46 is for the 4'x3' culvert at the driveway as shown on drawing. Both bid items include the safety end treatments shown in drawings.

**495 – ASPHALT DRIVEWAY**                      **Bid Item 47**

This item requires the Contractor to pave the driveways as shown on the plans over the prepared surface all in accordance with the appropriate TxDOT specifications.

**496 – DENSE-GRADED HOT MIX ASPHALT**                      **Bid Item 48 and 49**

These items require the Contractor to pave the roadway as shown on the plans over the prepared surface all in accordance with the TxDOT specification, see Drawing Sheet C-38 - 2" of Type D over 3" of Type C.

**497 – FLEXIBLE BASE**                      **Bid Item 50**

This item requires the Contractor to furnish and install the 15" of crushed limestone base for the Goforth road as shown on drawings.

**498 – PAVEMENT MARKINGS**                      **Bid Item 51, 52, and 53**

This item requires the Contractor to furnish and install markings for the roadway construction as shown on Drawing Sheet C-42.

Bid Item 51 – Type I

Bid Item 52 – Type II

Bid Item 53 – Type II A-A

**499 – PERMANENT SIGNAGE**                      **Bid Item 54, 55, and 56**

This item requires the Contractor to furnish and install signage for the roadway construction as shown on Drawing Sheet C-42, and TxDOT Drawings D & OM(1) -15 to TSR(4) - 13.

Bid Item 54 – Delineators

Bid Item 52 – Object Markers

Bid Item 53 – Permanent Signs

**Material Specifications:**

There were no questions.

**PART V: DRAWINGS**

Drawing TX-EN-0650 are divided into three sections

General – include details for embankment labyrinth Spillway, underdrain system, roadway, and traffic control, and geologic info, and SWPPP.

Structural – includes information for labyrinth spillway construction and the outlet for the PS pipe.



TxDOT Standard Drawings - traffic control standards during construction, markers, signage guardrail and safety end treatments.

## **VISIT TO PROJECT SITE**

### **Final Locations Designated/Marked**

<u>Item</u>	<u>Color of Flagging on stakes</u>
Benchmarks –	Red /White
Buried Material location -	Pink/Red/ White
Fences to be removed –	Orange/pink
Construction entrance –	Red/Pink
Construction Campsite –	Red/Orange
Stockpile location –	White /Orange
Centerline of new Goforth road alignment	Orange
Centerline of Embankment –	Pink
Centerline of new PS –	Red
Centerline of new labyrinth Spillway –	Red/Orange/White

### **Tour of Project Site**

Additional questions at the site are included below.

## **QUESTIONS & ANSWERS (Q&As)**

### **TECHNICAL Q&As**

**Q:** Is the site secured, closed in? What are the security requirements?

**A:** The site currently has barbed wire fencing. The County road (Goforth Rd.) is directly below the embankment and will remain open for the majority of the construction. It is the responsibility of the Contractor to provide security.

**Q:** What permits does the Contractor need?

**A:** To use the water in the lake for construction, TCEQ permit is required. It is the Contractor's responsibility to determine if permits are required. See GC Article 11 – Permits and Responsibilities.

**Q:** Is there a Buy American Act clause?

**A:** No.

**Q:** Who performs quality control testing?

**A:** The Contractor is responsible to perform all quality control testing and inspection (see Construction Specification 94). The NRCS will have on site a full time Construction Inspector who will do Quality Assurance for the PCCD and NRCS.

**Q:** How will the Zone 4 material be field tested to verify compaction?

**A:** The imported coarse aggregate specified for zone 4 shall be tested using a sand cone method. If the Contractor wishes to use a nuclear gage, the results shall be verified with a side by side test comparing results to the sand cone method. If within 1% on three test, the nuclear gage shall be acceptable to verify compaction.

**Q:** Does the entire embankment get shaped and smoothed?

**A:** No, only from Embankment centerline station 15+25 to 22+65, the top and side slopes get shaped and smoothed. The top of the embankment gets shaped and smoothed for the entire embankment.

**Q:** Are paid invoices showing actual mobilization and demobilization expenses required for interim payment?

**A:** Yes; for the last payment no.

**Q:** What about personnel expenses we don't have invoices for?

**A:** For mobilization and demobilization you may itemize a list of your actual personnel expenses used for mobilization, on your companies letterhead or wait till end for last payment.

**Q:** What does the term "protected from the entry of water" mean?

**A:** In Construction Spec 11 Section 8.a.3. and 4., the Contractor has to submit written plans stamped by a P.E. licensed in Texas that protect the planned new principal spillway and Labyrinth spillway from the entry of water until approved by the CO. The protection shall be by cofferdam, steel sheet piling or other means.

**Q:** What is the water elevation now?

**A:** Around Elev. 620.0 msl.

**Q:** Is there electrical service on site?

**A:** There are electrical lines on Goforth Rd.

**Q:** What elevation does the water have to be lowered to?

**A:** Plans and specification do not specify. The required work will require all of the water to be removed in the area of the construction.

**Q:** How much water is coming into the site?

**A:** 1 to 1.5 million gallons per day from the GBRA waste treatment plant in Buda, plus runoff from 5,204 acres in the drainage area.

**Q:** Are there any downstream water release requirements?

**A:** No

**Q:** Can the Contractor cut the dam and let the water go downstream?

**A:** No.

**Q:** What is the contact information for the GBRA treatment plant?

**A:** Michael Urrutia, Director of Water Quality Services  
Guadalupe-Blanco River Authority  
(830) 379-5822 x 525  
murrutia@gbra.org

**Q:** What is the pool depth and approximate storage?

**A:** See, the post –Construction Dam Information table on drawing sheet G-3.

**Q:** In Construction Spec 21 Excavation it states there is no guarantee the materials obtained from the specified excavations may be used directly in specified fills. Will it have to be wasted or hauled off site?

**A:** Stockpiling of excavated materials may be required. Unsuitable materials will go to the waste area designated on drawings, and the extra material will be spread-out in the waste area or stockpile area. Excavated materials shall be used in Zones 1 or 2, and remainder of fill comes from imported materials.

**Q:** The subgrade below the road base gets treated with lime correct?

**A:** Yes. Quicklime as Per Construction Spec 28.

**Q:** What is the PI of the soil being treated with lime?

**A:** The PI ranges from 20-50 according to the PAVEMENT THICKNESS DESIGN, GOFORTH ROAD REALIGNMENT, HAYS COUNTY, TEXAS report by Fugro Consultants Inc. Construction Specification 28 Section 12.a.1 calls for the lime stabilized subgrade to be constructed according to TxDOT Item 260. Item 260 states, "The Engineer will determine the target lime content and optimum moisture content in accordance with Tex-121-E or prior experience with the project materials".

**Q:** What are the temperature restrictions for concrete?

**A:** See Construction Spec 31, Concrete for Major Structures, Section 9 (Conveying) which states concrete shall be discharged into the forms within 1.5 hours if concrete temperature is less than 85 degrees. If temperature is 85 or above the time is cut to 45 minutes. See Section 22 Concreting in Hot Weather which states the temperature of the concrete shall be maintained below 90 degrees during mixing, conveying and placing. If using a superplasticizing admixture the temperature cannot exceed 95 degrees.

**Q:** Why is the Contractor not allowed to have a batch plant on-site?

**A:** Restriction based on nearby homes, air quality permit and restricted work area.

**Q:** How are the baffle blocks paid for?

**A:** See Construction Spec 31, Section 25.e. 1. Under Bid Item 27, Concrete Structural – Labyrinth Spillway Slab.

**Q:** How close are concrete plants to job site?

**A:** Contractor is responsible to determine. During the meeting someone stated there were 3 within 10 minutes of site.

**Q:** Is more than one CQC inspector required?

**A:** Depending on the type of work and scheduling of work, the Quality Control (Construction Spec 94) specification requires inspection to be accomplished by periodic, full time or continuous inspection. If the Contractor has more than one continuous inspection operation going at the same time, the specification requires 2 or more CQC inspectors.

**Q:** How is Concrete test handled?

**A:** Contractor's quality Control shall test from every truck, all fresh concrete test, slump, temp, air content, and Unit Wt., record time delivered, revolutions counter reading, and check weights of ingredients batched. From each pour the CQC shall get a set of cylinders for compressive strength test. The Contractor QC inspector shall reject all concrete that fails any portions of the requirements in Construction Spec 31.

**Q:** Is the protection of the site the Contractor's liability?

**A:** Yes, once the notice to proceed is issued, the Contractor has the responsibility to complete the work under contract and is responsible for all materials delivered and work performed until completion and acceptance. See PART II General Conditions Article 11 – Permits and Responsibilities, Article 12 – Conditions Affecting the Work, and Article 32 – Protection of Existing Vegetation, Structures, Equipment, Utilities, and Improvements.

**Q:** Does the existing spillway have to be maintained?

**A:** The Contractor is responsible for timing of operations at the site. I suggest careful consideration of scheduling operations that affect the operation of the site. Please keep in mind the site is a flood detention reservoir.

**Q:** What is the drainage area?

**A:** 5204 acres in the watershed plus the treated waste water from the GBRA treatment plant which is 1-1.5 million gallons per day.

**Q:** Are historical lake levels available?

**A:** No, it was stated that in the May 2015 floods water was up to the fore bay of the Auxiliary Spillway, but not as high as the 2013 floods.

**Q:** Constructions of temporary cofferdam in the flood pool, are there some limits.

**A:** No the PCCD has easements in this area.

**Q:** Can we dewater the entire reservoir?

**A:** Yes

**Q:** How far is the treatment plant outlet from the reservoir?

**A:** Approximately 15,000 feet upstream into a tributary.

**Q:** Will the power poles be moved?

**A:** The power poles affecting the work shall be moved by others.

At the Site:

**Q:** What is the size of the existing outlet pipe?

**A:** 30-inch ID

**Q:** Where is the borrow area?

**A:** None designated, however if soil is needed for a temporary coffer dam you may use material from the pool area below elevation 620. Any materials deposited in pool area that is not part of the required construction shall be removed prior to acceptance of the work.

**Q:** Can we use the existing system to dewater?

**A:** Yes, up to a point. Keep in mind the existing system shall be removed to install the new system of the labyrinth spillway and PS pipe, to move the road, and to install the new outlet structure.

**Q:** Does the quantity of excavation for the new road get paid under the existing Bid Item 12 Excavation?

**A:** Yes, the road realignment's excavation is paid under Bid Item 12. The fill for the road is paid under Flex Base Bid Item 50 and Lime Treated Earthfill Bid Item 21.

**Q:** Is the water level today the normal water level?

**A:** Yes, it does fluctuate depending on runoff from the drainage area.

**Q:** Is there hydrilla in the pool?

**A:** No

**Q:** Are there stage - discharge information on the plans?

**A:** Yes for the new 42" system, not the existing pipe.

**Q:** Is there a water diversion plan in the solicitation?

**A:** No, the Contractor is responsible to develop, see Construction Spec 11 Removal of Water. The required plan should address bypassing the water, flood impacts, dewatering the embankment and surface water.

**Q:** Which power poles will be moved?

**A:** Shown on plans

**Q:** If it rains a lot where does the water go?

**A:** The runoff is stored in the detention pool and then is released downstream slowly through the PS until the water level is down to its lowest ungated outlet.

**Q:** Is the Contractor responsible for maintaining a certain level of detention or storage of water during a flood event?

**A:** No, the Contractor is responsible to protect the construction of the new labyrinth spillway and PS until CO approved. However it is a good idea to have freeboard built into your system for these events.

Q: What about the horses present today (site showing) during construction?

A: The PCCD will have the horses moved prior to the construction start.

### **ADMINISTRATIVE Q&As**

Q: What entities need to be listed as Additional Named Insured on the insurance certificates?

A: Plum Creek Conservation District is the only entity to be listed.

Q: Do the Exhibit E References need to be included in the sealed bid?

A: Yes. See IFB Part I, Subpart B, Instructions to Bidders #3 which lists the forms that must be included in a sealed bid for this project.

### **ATTACHMENTS:**

***Be sure to use these revised pages for your sealed bid:***

REVISED IFB Page GP-10 of 22, Bid Schedule (Cover Page)

REVISED IFB Page GP-13 of 22, Bid Schedule (Sheet 3 of 3)

SKETCH showing change in Limits of Construction (reference Drawing Sheet C-2)

Copy of 7-28-15 Site Showing Attendance sheet (3 pages)

### **DISTRIBUTION:**

To be posted on PCCD website. All registered plan holders and 7/28/15 site showing attendees will be advised via email (or otherwise) when Amendment #1 is available for downloading from **www.pccd.org/ (Job Bids tab)**

**EXHIBIT B**

**BID SCHEDULE (Cover Sheet)**

The undersigned, in compliance with Invitation for Bids No. PCCD-15-PCW6-01 for Plum Creek Watershed, Floodwater Retarding Structure (FRS) Site No. 6 Rehabilitation, Hays County, Texas, having examined the plans, specifications and bidding documents, the site of the proposed work, and being familiar with all the conditions surrounding performance of the proposed project; agrees to furnish all labor, material and equipment and perform all work required in accordance with the plans, specifications and contract documents for the prices below, if this offer is accepted by the Contracting Local Organization within \_\_\_\_\_ calendar days after the date bids are due. *[Note: Failure to insert a number means the bidder accepts the minimum thirty (30) calendar days as required in Notice to Bidders.]*

**Award Restriction**

One award for the aggregate for all bid items will be made under this solicitation.

For other than bid items with a lump-sum "unit," the quantities listed in the bid schedule on which unit prices are requested are estimates only.

**-- Bidders are entitled to EXCLUDE exempt taxes in their bid prices --**

[See PART I, Subpart B, Instructions to Bidders #4]

*Block below added via IFB Amendment #1, 7/30/2015.*

**TOTAL BID PRICE:**

**In Figures:** \$ \_\_\_\_\_

**In Words:** \_\_\_\_\_ **Dollars**

**and** \_\_\_\_\_ **Cents**

NOTE: AMOUNTS SHALL BE SHOWN IN BOTH WORDS AND FIGURES. IN CASE OF DISCREPANCY, THE AMOUNT SHOWN IN WORDS WILL GOVERN.

**Bidder's Name/Title (type or print):** \_\_\_\_\_

**Bidder's Signature:** \_\_\_\_\_

**Company Name:** \_\_\_\_\_

**Date:** \_\_\_\_\_

**EXHIBIT B (continued)**  
**BID SCHEDULE (Sheet 3 of 3)**  
**PLUM CREEK WATERSHED**  
**Floodwater Retarding Structure Site 6 Rehabilitation**  
**Hays County, Texas**

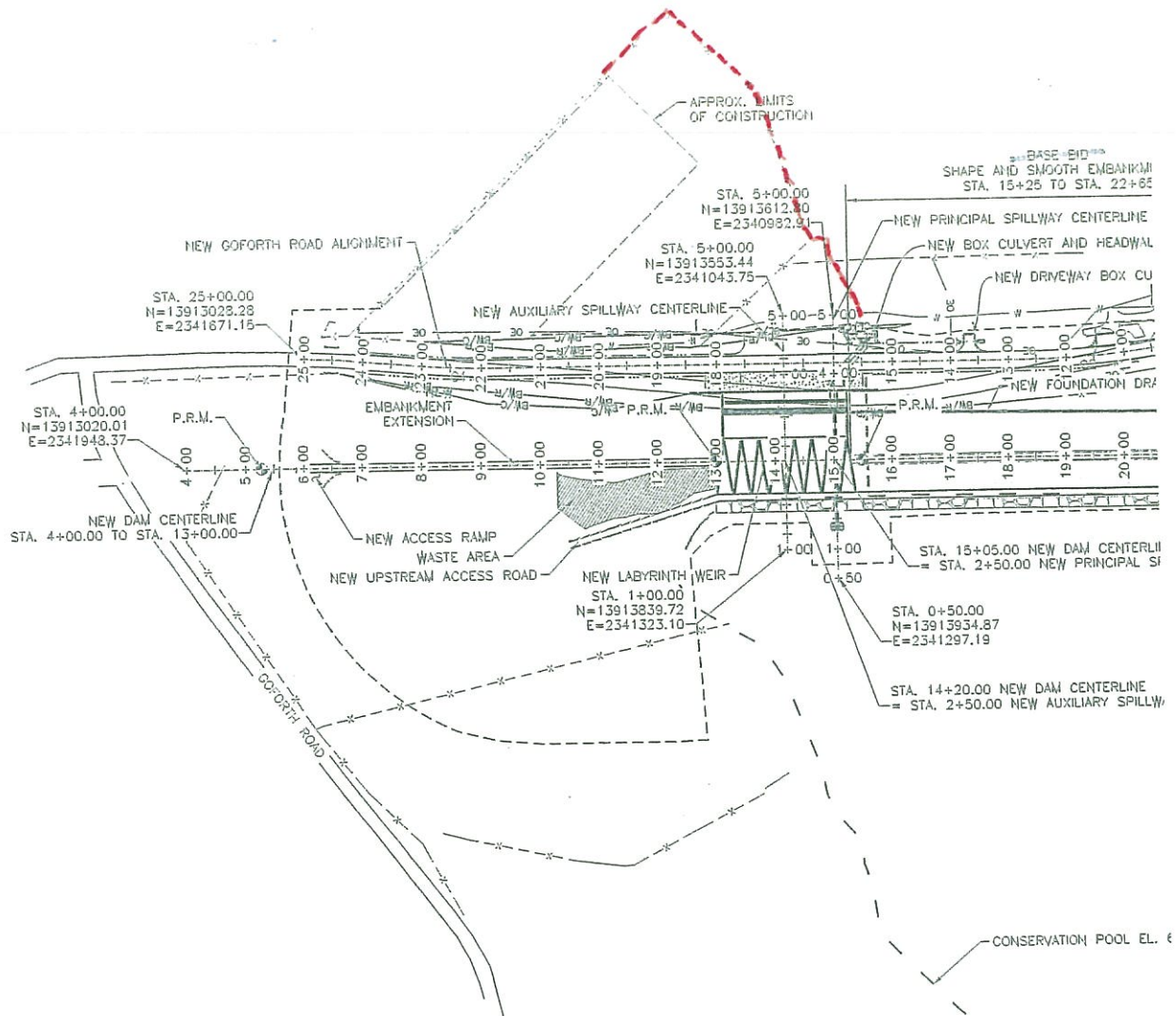
Item No.	Work or Material	Const Spec. No.	Quantity	Unit	Unit Price	Amount
40	Contractor Quality Control	94	1 Job	Lump Sum	\$ xxxxxxxxxx	\$ _____
41	Geotextile	95	2,500	Sq. Yd.	\$ _____	\$ _____
42	Shaping and Smoothing	446	2.5	Acre	\$ _____	\$ _____
43	Terminal Anchor Section	493	1	Each	\$ _____	\$ _____
44	Guardrail End Treatment	493	1	Each	\$ _____	\$ _____
45	Box Culvert, 5'x5'	494	248	Lin. Ft.	\$ _____	\$ _____
46	Box Culvert, 4'x3'	494	29	Lin. Ft.	\$ _____	\$ _____
47	Asphalt Driveway	495	197	Sq. Yd.	\$ _____	\$ _____
48	HMAC Type C	496	<b>750</b>	Ton	\$ _____	\$ _____
49	HMAC Type D	496	<b>500</b>	Ton	\$ _____	\$ _____
50	Flexible Base	497	1,915	Cu. Yd.	\$ _____	\$ _____
51	Pavement Marking, Type I	498	5,600	Lin. Ft.	\$ _____	\$ _____
52	Pavement Marking, Type II	498	5,600	Lin. Ft.	\$ _____	\$ _____
53	Reflective Pavement Marker, Type II A-A	498	36	Each	\$ _____	\$ _____
54	Delineators	499	4	Each	\$ _____	\$ _____
55	Object Markers	499	6	Each	\$ _____	\$ _____
56	Permanent Signs	499	2	Each	\$ _____	\$ _____
57	Irrigation System	6	1 Job	Lump Sum	\$ xxxxxxxxxx	\$ _____
58	Irrigation Water	6	3,462	1,000 Gallon	\$ _____	\$ _____
<b>TOTAL BID – FRS Site No. 6 Rehabilitation .....</b>						<b>\$ _____</b>

NOTE: Also enter amount of Total Bid in figures and words on Exhibit B, page GP-10 of 22.

---- END OF BID SCHEDULE ----



IFB Amendment #1  
7-30-2015



**NOTE:**

1. INSTALL SIX PERMANENT REFERENCE MARKERS AT COMPLETION OF PROJECT. LOCATE TWO MARKERS ON LABYRINTH TRAINING WALLS. LOCATE ONE MARKER ON EACH OF THE INTAKE RISER AND CULVERT INLET. (NOT SHOWN ON THIS SHEET FOR CLARITY). FINAL LOCATION OF THE PERMANENT REFERENCE MARKERS TO BE DETERMINED BY THE CONTRACTING OFFICER.

Red = Change in limits of construction.

Reference Drawing TX-EN-0650 Sheet C-2

# SITE SHOWING ATTENDANCE

IFB No. PCCD-15-PCW6-01 – Plum Creek Watershed FRS Site 6 Rehabilitation  
July 28, 2015

Page 1 of 3

Attendee Name / Title	Company Name	Company Address (INCLUDE physical address and mailing address)	Contact Numbers
RICH KING	ASI CONSTRUCTORS, INC.	Email: rking@asicconstructors.com	Phone: 719-647-2821 FAX: 719-647-2890 Mobile: 719-248-2647
Dustin Mortensen	Freese + Nichols	Email: D-M@freese.com	Phone: 512-612-3137 FAX: 512-817-3101 Mobile: 937-932-1144
Lonnie Mitchell	A.L. Helms, Inc.	Email: lonnie@alhelms.com	Phone: 903-626-5911 FAX: 903-626-4156 Mobile:
Tyler Emmerson	THUSSEN-LAUSTUN, INC.	Email: tyler@laughtint.com	Phone: (713) 429-6500 FAX: (713) 675-7022 Mobile: (713) 875-4131
Gary Quintanilla	TSE LABORATORIES	Email: garyqtsinc@gmail.com	Phone: (210) 455-5882 FAX: (210) 455-5884 Mobile: (210) 392-2260
MARK DONATZO	DONATZO ENTERPRISES	Email: mark@donatzoenterprises.com	Phone: 210-490-3933 FAX: 210-490-8895 Mobile:
Quinton Bass	PBJ Services	Email: HBass54@aol.com	Phone: FAX: Mobile: 407-209-5491
Travis Keller	Austin Engineering Co. Inc.	Email: tkeller@aecoinct	Phone: 512-327-1464 FAX: 512-327-1765 Mobile: 512-657-2830
DAVID PROCTOR	DCI CONTRACTING	Email: dproctor@dcicontracting.org	Phone: 940-626-0022 FAX: 940-626-0047 Mobile: 940-453-2472
A.S. Stuecklein	S.L.S. Construction, Inc.	Email: ajs@slsconstruction.org	Phone: 281-541-6047 FAX: 713-731-8955 Mobile:



# SITE SHOWING ATTENDANCE

IFB No. PCCD-15-PCW6-01 – Plum Creek Watershed FRS Site 6 Rehabilitation  
July 28, 2015

Page 2 of 2

Attendee Name / Title	Company Name	Company Address (INCLUDE physical address and mailing address)	Contact Numbers
STEVE ROSIEK	ROSIEK CONST. CO., INC.	Email: srosiekesbeglobal.net	Phone: 817-277-4342 FAX: Mobile:
Ronald Gardner, Jan Bech Tony Beckey Shawn Higgins	NRCs	Email:	Phone: FAX: Mobile:
ROS LUNKWITZ	Arcuten Western	Email: RLUNKWITZ@WASH6.COM	Phone: 972-457-8500 FAX: Mobile:
Steven Bednarz	TSSWCB	Email: sbednarz@tsswcb.texas.gov	Phone: 254-773-2250 FAX: Mobile:
Craig Bond DAN PARKER	AFTS AUSTIN FILTER SYSTEMS	Email: craigc@ustmfiltersystems.com Email: dan@ustmfiltersystems.com	Phone: 512-294-6442 FAX: 512-331-6673 Mobile: 512-331-6687
Jim Lauer	Five Star Concrete	Email: Jim@FiveStarConcrete.net	Phone: FAX: Mobile: 512-810-3036
Larry Vinkler	Keystone Cons. Inc.	Email: estimating at Keystone-construct. com	Phone: 512-288-6437 FAX: 512-288-6439 Mobile: 512-748-3582
Brad Bechthol	MAC, Inc.	Email: brad@macintexas.com	Phone: 512-326-3920 FAX: 512-326-3120 Mobile: 512-350-3767
Jim O'Reilly	TEXAS STEELING	Email: jim.o'reilly@steelco.com	Phone: 210-452-6744 FAX: Mobile:

# SITE SHOWING ATTENDANCE

IFB No. PCCD-15-PCW6-01 – Plum Creek Watershed FRS Site 6 Rehabilitation  
July 28, 2015

Page 3 of 3

Attendee Name / Title	Company Name	Company Address (INCLUDE physical address and mailing address)	Contact Numbers
Doss Watersone	STRUCTURAL ASSURANCE	Email: <del>WATERSONE</del> STRUCTURAL-US.COM	Phone: (512) 945-9380 FAX: Mobile:
JIM RIDGWAY	BRYAN CONSTRUCTION	ESTIMATING@bryan- Email: CONSTRUCTION-CO.COM	Phone: 979-776-6000 FAX: 979-776-6000 Mobile:
			Phone: 210-590-1110 FAX: Mobile: 210-722-5591
BRANDON WHITE	DERDON INT	Email: BRANDON@DERDONLR.COM	Phone: FAX: Mobile: 512-298-7026
William WARRICK SR. PRES. MCA	SURVEYING & ADV MAPPING, LLC	Email: WWARRICK@SAM.BIZ	Phone: FAX: Mobile:
Johnie Halliburton James Holt Attorney Bob Wilson	Plum Creek Conso District	Lockhart, TX Email:	Phone: FAX: Mobile:
Jean Ann Maynard	R+J Contract Services	Email: jamaynard1@msn.com	Phone: FAX: Mobile:
		Email:	Phone: FAX: Mobile:
		Email:	Phone: FAX: Mobile:
		Email:	Phone: FAX: Mobile:
		Email:	Phone: FAX: Mobile: